



**SELF-PACED AND INSTRUCTOR-LED
TRAINING PROGRAMS
FOR THE CSCF
PROFESSIONAL DESIGNATION**

COURSE BROCHURE
Program Features and Administration

CSCF

CERTIFICATE IN SUPPLY CHAIN FUNDAMENTALS

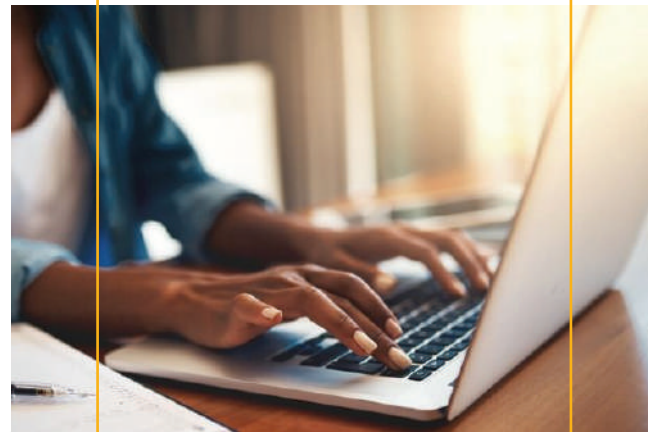
www.brasl.org

CSCF **LEARNING** Objectives

Upon completion of CSCF training, the learner will be able to:

- Describe the basic elements and principles of supply chain management.
- Identify the flows and views of supply chain.
- Recognize the drivers, facilitators and obstacles in supply chain management.
- Perform calculations used in supply chain management for Forecast of Sales, Safety Stock, Shipping Performance, Economic Order Quantity and Pipeline Inventory.
- Define inventory replenishment policies.
- Perform calculations for costs related to manufacturing.
- Describe the various types of warehouse layouts.
- Define the various modes of transportation and the benefits and limitations of each.
- Recognize the key success factors in supplier relationship management (SRM).
- Define the goals of a customer relationship management (CRM) process.
- Understand the main productivity improvement tools and their applications.
- Recognize the trends and outlook in supply chain management.

CSCF's CERTIFICATE PROGRAM'S **Purpose and Scope**



Purpose: To introduce candidates to the main principles and processes in supply chain management.

Scope: The CSCF course contains the knowledge and skills required for performing job roles in the supply chain function, such as Planner, Buyer, Logistics Manager, Warehouse Staff, Inventory Manager, Production Manager, Customer Service Associate and others.

INFERENCE ABOUT CSCF CERTIFICATE HOLDERS

A CSCF Certificate holder has a basic understanding of the various processes and calculations used in supply chain management, and is able to support and interact with the related functions.

CSCF Self-paced & Instructor-led Courses

■ **CSCF CURRICULUM:**

Similar to the other courses offered by BRASI, CSCF course has been developed using the ADDIE methodology of curriculum development, following the guidelines contained in the ASTM Standard E-2659.

BRASI's Program Advisory Group (BRASI PAG) is responsible for the development, surveillance and continuous improvement of BRASI's training programs.

The CSCF course provides fundamental knowledge in the key areas of supply chain management, including the following: Supply Chain's Alignment with competitive strategy, supply chain channels, supply chain complexity, diversification and integration, supply chain planning process, sales forecasting, inventory management, customer service, supplier relationship management, transport and logistics, introduction to productivity tools such as Lean, Six Sigma and Just In Time, plus other topics related to supply chain management.

■ **Who will benefit:** People who wish to acquire a functional knowledge of supply chain management and its underlying principles, terminology and core processes will benefit from the CSCF training program.

■ **MODE OF TRAINING:**

Both Self-paced and Instructor-led modes are available. The training includes 24x7 access to the BRASI Learning Management System through user login.

■ **PROCESS:**

First, students create their user profile on the BRASI web site. There is not cost involved and no payment information is needed to create user profile. On the landing page, they can find more details about the training courses, the procedures and requirement, helping them understand the features of the various courses offered, and the options. When ready, students select the course(s) they want to take, and proceed to check out. Acceptable modes of payment include major credit cards and PayPal. The course is designed to be completed within three months. However, extension is allowed upon request. Upon completing the course review, students can take the final test. Time allowed for the test is 90 minutes, and the passing score is 70%.

■ **CERTIFICATE VALIDITY:**

Each certificate carries a unique ID code, and is valid for life.

LEARNING RESOURCES include online interactive training modules, downloadable, print-ready handbooks, examples and exercise files and a quiz for each module. Students can take the final test upon completion of the course review, and download the certificate upon passing the test. Certificates for all of the BRASI courses are issued centrally by BRASI only.

Live Q&A sessions are held to answer any specific questions and explain key concepts as needed. Participation in the Q&A sessions is optional and is not taken into account for the passing score.

COURSE FEE, CANCELLATION AND REFUND: The course fee is posted on the BRASI website and is subject to change without notice. Cancellation is allowed within three days from the date of access to the course. Full refund is made within two days of cancellation.



In celebration of its 40th Anniversary, BRASI is offering subsidies in course fees. Details are available on the BRASI website.





Registration for BRASI courses can be done directly at the BRASI website or through BRASI's Affiliated Organizations, featured on the BRASI website. In either case, training is conducted utilizing BRASI online learning management system, and the certificate is issued by BRASI.

For further information, please visit the Contact Us page on the BRASI web site.



Business Research and Service Institute

CONTACT US:

-  Toll-free USA & Canada 1-800-636-8133
-  info@brasi.org
-  Business Research and Service Institute, LLC
PO Box 3935, Washington, DC 20027, USA
-  www.brasi.org

